

Scholarship Awards

{ Our "Honors Program" }



Integrity • Dignity • Esteem

We think that many of the characteristics that make up a good student are also traits you'd like to find from your Credit Union.

Come see what sets us apart from the rest.

Pacific Crest Federal Credit Union. Where You Belong.



Locations

541-884-1376 • 1-800-570-0265

Klamath Falls Main Branch

2972 Washburn Way, Klamath Falls, OR 97603

Lobby Hours:

9:00 a.m. – 6:00 p.m. Monday & Friday
9:00 a.m. – 5:00 p.m. Tuesday – Thursday

Drive-Thru Hours:

7:30 a.m. to 6:00 p.m. Monday – Friday

Lakeview Branch

123 North G Street, Lakeview, OR 97630

Lobby Hours:

9:30 a.m. – 5:00 p.m. Monday – Thursday
9:30 a.m. – 6:00 p.m. Friday

Drive-Thru Hours:

9:30 a.m. – 5:00 p.m. Monday – Thursday
9:30 a.m. – 6:00 p.m. Friday

South Klamath Branch

6450 Galpin Lane, Klamath Falls, OR 97603

Lobby Hours:

9:00 a.m. – 6:00 p.m. Monday & Friday
9:00 a.m. – 5:00 p.m. Tuesday – Thursday
10:00 a.m. – 2:00 p.m. Saturday

Drive-Thru Hours:

7:30 a.m. to 6:00 p.m. Monday – Friday
10:00 a.m. – 2:00 p.m. Saturday

ATM Available at All Branch Locations

Additional ATM Locations:

3450 South Sixth Street, Klamath Falls
3100 Campus Drive, Klamath Falls
200 North 7th Street, Klamath Falls

Call24 Audio Response System

541-850-9531 • 1-888-721-9125

Online Banking

at www.pacificcrestfcu.com

Place
Postage
Here

Pacific Crest Federal Credit Union
Attn: Marketing Department
P.O. Box 1179
Klamath Falls, Oregon 97601

FROM:



We Want to Invest in Our Community's Future...You!

Yes, You Heard Right!

Each year, Pacific Crest Federal Credit Union will award scholarships in honor of young members who graduate from high school in one of the four counties that the credit union serves.

• The Goal...

The purpose of our scholarship awards is to encourage Pacific Crest Federal Credit Union members to be active participants in our community and to support local students in seeking future education.

• Eligibility...

Interested applicants must be Pacific Crest Federal Credit Union members, graduating seniors in any of the following school districts: Klamath City or County, Lakeview, Modoc County, or North East Siskiyou County, and plan to enroll as full-time undergraduate students at eligible institutions.

• Eligible Institutions...

Public or private, generally accredited, two-year or four-year institutions of post secondary education are eligible.

• Scholarship Amount...



The Dave & Lois Stemple Scholarship

This scholarship recognizes the numerous years of volunteer services on the Board of Directors by Dave Stemple and Dave's belief in the credit union difference. The Dave & Lois Stemple Scholarship is a one-time \$1,000 award.

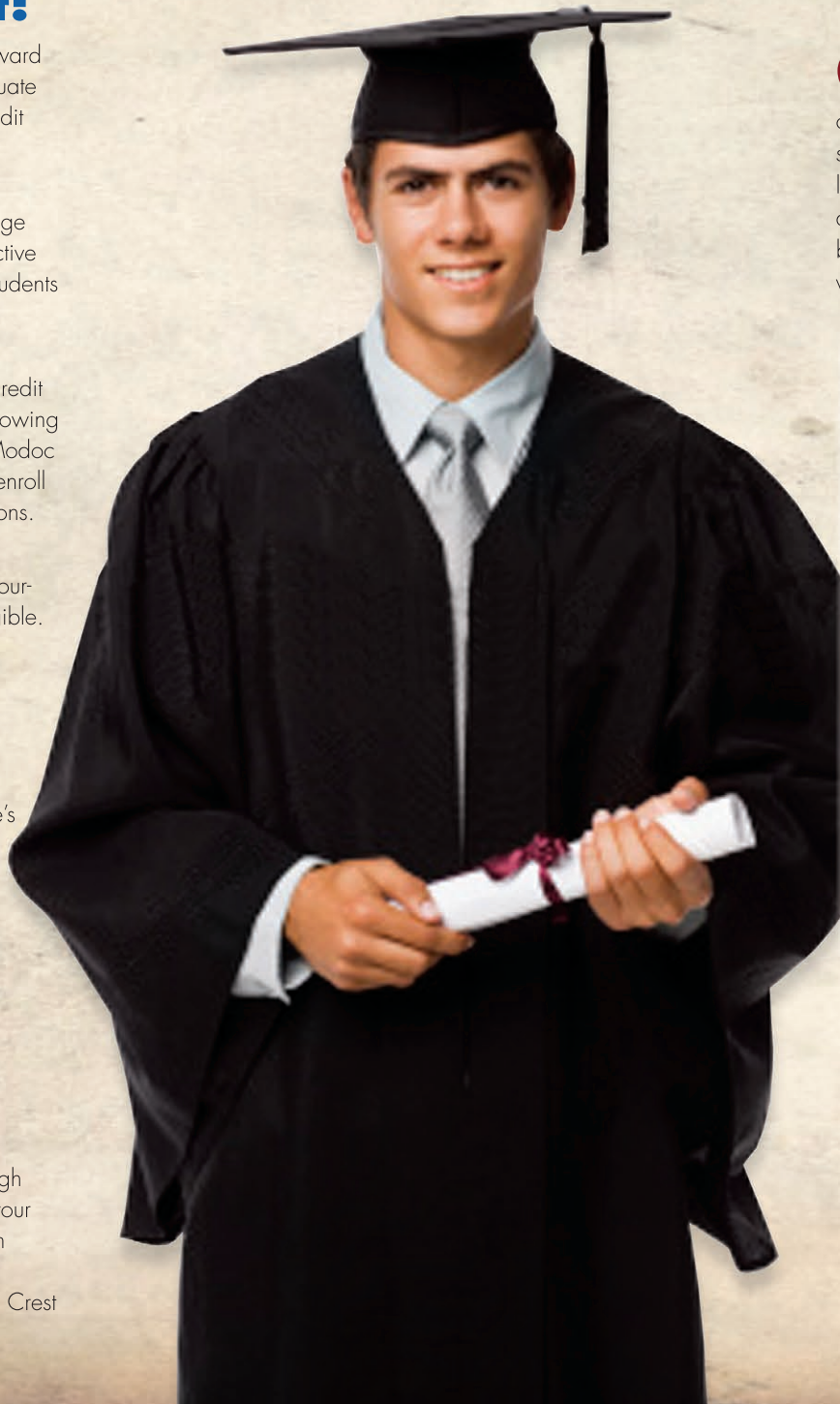
Two additional \$1000.00 scholarships - will be awarded to qualified applicants. The awards will be for the period of one academic year.

• Selection Criteria...

The criteria for scholarship awards will be based on the applicant's financial need, community involvement, and academic achievement.

• How to Apply...

Scholarship awards applications are available through the Pacific Crest Federal Credit Union website. For your convenience, you may also mail in the attached form or pick up an application at a Pacific Crest branch. Completed applications are to be returned to Pacific Crest Federal Credit Union no later than April 15th.



We're in this Together.

Our determination to do everything we can to spur and encourage the growth and development of the community we live in is demonstrated in many ways. Our scholarship program is just one of them. "Local money from local people, for local people" and "Where you belong" are more than just things we say. They are words we live by. If you are a member, you already know this. Every day, we say with pride: "Come see what sets us apart!"

Yes...

Please send me a Pacific Crest Federal Credit Union Scholarship Award Application.

Full Name: _____

Street Address: _____

City: _____

State/Zip: _____

Phone: _____

Email: _____



Pacific Crest

FEDERAL CREDIT UNION

Where You Belong